



# CABLE GRIPS & ACCESSORIES



QUICK AND EFFICIENT CABLE INSTALLATION AND SUPPORT

2012



## Welcome to Slingco America Inc. A business focused on your needs



Nick Dykins, CEO (right)  
Matt Dykins, President (left)

We've been living and breathing cable grips and steel wire rope for as long as we can remember. You can blame our Dad for that! He founded Slingco more than 40 years ago. Since then, we've grown up and so has the company, evolving into an expert design and manufacturing operation, producing high quality cable grips, wire rope assemblies and more.

Slingco is based in Fayetteville, Georgia, but you'll find our products around the world, making heavy-duty cable installation and support a whole lot easier for people working in industries as varied as civil engineering, aerospace, transport, public utilities, marine and offshore, the military, performing arts, vehicle building and construction.

You can't make mistakes when you're dealing with products like ours. Too much depends on them. That's why we're obsessive about quality and innovation in design and manufacturing, and why nothing leaves our hands that isn't 100% dependable.

Because we understand exactly what your operation needs, we also know cost is a factor. We keep our prices realistic and hold a vast range of stock for fast – even same day – delivery.

We're brothers, partners and the driving force behind Slingco, but we're far from the whole picture. We've got a fantastic team of skilled people who share our obsession with quality and great service. We're proud of every one of them.

Together, we're going to carry on developing outstanding products. We're going to carry on getting them out to you in record time. And we're going to carry on being the sort of company it's a pleasure to deal with.

If you've a specific requirement you think we could help with, or would just like to make contact for a general discussion, please email [sales@cablegrip.com](mailto:sales@cablegrip.com) or call us on 888 685 9478.

# Contents

## HEAVY DUTY CABLE GRIPS

MU Type - Multi Weave Cable Grip	7
A Type - High Strength Cable Grip	7
R Type - Rotating Multi-Weave Cable Grip	8
ST Type - Single Eye Double Weave Cable Grip	8
RT Type - Rotating Eye Double Weave Cable Grip	9
Splicing Grip - Multi Weave Cable Grip	9

## LIGHT-MEDIUM DUTY CABLE GRIPS

SE Type - Single Eye Cable Grip	10
DE Type - Double Eye Cable Grip	10
L Type - Lace Up Cable Grip	11
OS Type - Offset Eye Cable Grip	11
Open Ended Cable Grip	12
Fiber Optic Pulling Grip	12

## NON-METALLIC (ARAMID) CABLE GRIPS

NS - Non-Metallic (Aramid) Single Eye Cable Grip	13
ND - Non-Metallic (Aramid) Double Eye Cable Grip	13
NO - Non-Metallic (Aramid) Offset Eye Cable Grip	14

## CABLE SUPPORT GRIPS

Wind Turbine Support Grip -	14
Heavy Duty Thimble Offset Eye	
Single Eye Support Grip	15
Single Eye Support Grip - Lace up	15
Single Eye Support Grip - Rod Closing	16
Double Eye Support Grip	16
Double Eye Split Mesh Lace Closing Cable Support Grip	17
Double Eye Split Mesh Rod Closing Cable Support Grip	17
Offset Eye Support Grip	18
Offset Eye Lace Up Cable Support Grip	18
Offset Eye Rod Closing Cable Support Grip	19
Universal Eye Closed Mesh Cable Support Grip	19
Universal Eye Split Mesh Lace Closing Cable Support Grip	19
Universal Eye Split Mesh Rod Closing Support Cable Grips	20



## CONDUIT RISER CABLE GRIPS

Conduit Riser Cable Grip	21
--------------------------	----

## STAINLESS STEEL CONNECTOR/BOX GRIPS

Stainless Steel Connector/Box Grip	22
------------------------------------	----

## HOSE RESTRAINT CABLE GRIPS AND MARINE CABLE GRIPS

Hose Restraint Cable Grips	23
Marine Cable Grips	23

## LINE PULLING SWIVELS

Line Pulling Swivel - Stainless Steel	24
Line Pulling Swivel - Galvanized	24

## ACCESSORIES

Swivel Tester	25
Banding Tool	25
Cable Laying Roller	26
Feed Tube	26
Service Wedge Clamp	26

# Cable Grips - for quick and efficient cable installation and support

## About Cable Grips

Cable grips are a quick, efficient way to install/control electrical or heavy-duty cables. Cable grips are re-usable (subject to inspection) and can also be used to support or pull any cylindrical object within their grip and load carrying capacity.

Slingco standard Cable grips are manufactured from high tensile galvanized or stainless steel wire rope or aramid strand.

A precise, hand-woven construction process, coupled with individual product inspection, ensures a high quality product for reliable, long lasting usage.

## Applications

- Overhead house service cables
- Portable tool supply cables
- Portable compressed air lines
- Conduit risers
- Moveable hydraulic hoses
- Cable strain relief
- Oil support cables
- Marine applications
- "Guy rope" adjusters
- Fiber optic cable pulling
- Installing transmission cable

## Customers

- Oil rig operators
- Marine/offshore contractors
- Mining operators
- Overhead line stringing contractors
- Trench cable laying contractors
- Pipe laying contractors
- Winch and elevator manufacturers

## Quality Assurance

Slingco operates a total quality management system and is accredited to ISO 9001.

## Design & Engineering

An integral part of our manufacturing facility is our CAD supported design engineering team. As well as being focused on our own design and development projects, our engineering team's skills are available to our customers.

Our aim is complete customer satisfaction in terms of product performance, budget and deadline.

## Pulling Applications

When the correct cable grip is selected, cable installation through ducts, conduits and trenches is considerably easier. The cable grip adds little to the overall diameter of the cable and "free passage" is normally available through sheave blocks and pipes. Cable grips can often be used on a "new for old" cable replacement by applying two grips on a back-to-back basis with a solid link or swivel between grips.



This method uses the old cable to pull through the new replacement. Swivel links can be used to allow for reduced torque build-up induced by the pulling equipment and inherent lay in the cables.

## Product Selection

Slingco offers a wide selection of cable grips to match standard applications. However, larger diameters and longer lengths can be woven to special order. Slingco can manufacture very large, custom-made orders including grips with diameters up to 20 inches and breaks exceeding 120,000lbs.

Lattice dimensions shown are as fitted to a nominal diameter of cable and prior "free length" may be slightly longer than stated.





## Load Capacity

Approximate break loads (lbs) are quoted, as a guide only, for cable grips. Application load is normally calculated to be reduced by at least a factor of 5x the approximate break load. Due to the wide variety of application parameters, the end-user must apply a sensible safety factor to suit the safety requirements for the conditions of use.

**NOTE:** If there is any doubt about application suitability or safety, please consult Slingco before using the cable grips in question.

## Support applications

Cable grips used for cable support applications have the same construction as grips used in pulling applications,

except the grips stay in place to reduce strain load.

They can be a single or double weave type according to the load to be supported and can have one or two supporting 'eyes' depending on the available anchor points and the disposition of the load.

For supporting cable grips, choose from the various types illustrated in the catalog, including lace-up types where needed.

Due to the constant load-bearing nature of a supporting application, allow for a suitable "factor of safety" on capacity and arrange for regular recorded inspection of the cable grip's "condition of safety" throughout its active life.



# Cable Grip Range

## Medium Duty Cable Grips

Slingco produces a full range of medium duty cable grips specifically designed for pulling cable, strain relief or cable support. Grips are made from galvanized or stainless steel wire rope and available in a variety of designs, depending on the particular application for which the grip is intended to be used.

## Heavy Duty Cable Grips

Designed to be used in heavy duty pulling applications, manufactured from high tensile galvanized wire rope or stainless steel wire rope, and available in a variety of styles. The range includes multi-weave products, high-strength grips, and revolving eye solutions for medium to heavy pulling applications

## Non-Metallic (Aramid) Cable Grips

These woven mesh grips offer a non-metallic alternative to steel and are ideal for use in harsh conditions, in explosive atmospheres, for sub-sea work and for live-line work in the electrical industry. A non-metallic cable grip offers a dramatically improved weight to break ratio, together with many additional benefits such as corrosion and chemical resistance.

These cable socks also exhibit excellent thermal and dimensional stability, together with light weight and a low elongation at break.

## Off-shore Cable Grips

Slingco offers a wide selection of cable grips to match standard applications. However, larger diameters and longer lengths can be woven to special order. Slingco can manufacture very large, custom-made orders including grips with diameters up to 20 inches and breaks exceeding 120,000lbs.

## Cable Support Grips

Slingco Support Cable Grips are designed for supporting cables as they hang either horizontally or vertically, and for taking the strain off connectors and wall sockets. This comprehensive range encompasses single eye, double eye, offset eye and universal eye products, as well as heavy duty grips with greater load capacities.

## Wind Turbine Cable Support Grips

The design allows power cables to be passed through the cable grip to achieve an evenly distributed load and strain relief. The Slingco grips spread the load

along their full length providing support without damaging the cable itself.

Special features include rounded ferrules to avoid any abrasion or damage to the cable, and the offset eye allows a single fastening point minimizing contact points with the cable.

## Conduit Riser Cable Grips

A single weave grip, with a support ring, designed for the support of electrical cabling. These conduit riser cable grips are for permanent support of vertically suspended electrical cable that requires strain relief due to its self weight.

## Custom Cable Grips

Slingco offers a wide selection of cable grips to match standard applications. However, larger diameters and longer lengths can be woven to special order, with custom-made orders including grips with diameters up to 20 inches and breaks exceeding 120,000lbs.

## Pulling Accessories

We offer a range of pulling accessories used in the electrical and utility industries, including cable laying rollers and feed tubes.

## Technical information

The Working Load (WL) of a Slingco cable grip will depend on the Factor of Safety (FOS) applied to the Minimum Breaking Load.

For example, where the operational risk is considered to be normal, it is recommended that a FOS of 5 be applied, for high risk operations a FOS of at least 10 should be considered.

The Approximate Breaking Load stated on any certification, the recommended Factors of Safety, and any implied or stated fitness for purpose, are all only applicable when the cable grip is as new and unused.

There are many factors that the person(s) using the Slingco cable grip must take into consideration when trying to calculate a safe working load as it is impossible to guarantee

a suitable safety factor when there are many variables which change from application to application.

In addition, before using any cable grip, the user must carry out a full assessment of its suitability for the proposed application, and the level of operational risk involved, including taking account of:

- The size of the cable grip, in relation to the size and shape of the gripped object(s).
- The stability of the object(s) when gripped.
- The grip surface of the object(s).
- The anticipated path of movement, including possible obstructions.
- The resistive force of the object being moved.
- The minimum-breaking load (MBL) of the cable grip.

- The condition of the cable grip.
- Suitability and compatibility of any attachments used.
- The environment / operating conditions.
- Persons at risk
- When selecting the cable grip you require you must allow for a 20% variance in break loads and, if there is 'twist' in the cable you are pulling, a suitable swivel must be used.

If you have any questions regarding suitability for any particular application please call the distributor that supplied the cable grip or the Technical Department at Slingco.

Please note: Slingco cable grips must be double steel banded securely before being pulled.

# Heavy Duty Cable Grips

## MU Type - Multi Weave Cable Grip

The triple weave construction of this type of cable grip is ideal for heavy loads; the cable grips are color coded for ease of identification; primarily for pulling aluminum conductor.



Slingco part no.	Color	Size range	Lattice length	Approx breaking strength (lbs)
Galvanized				
ZCS1710	Dark green	0.25 - 0.50"	31"	7,000
ZCS1711	Brown	0.50 - 0.75"	45"	10,500
ZCS1712	Light blue	0.75 - 1.00"	43"	14,100
ZCS1713	Gold	1.00 - 1.25"	65"	25,000
ZCS1714	Black	1.25 - 1.50"	59"	31,000
ZCS1715	Red	1.50 - 1.75"	82"	31,000
ZCS1716	Dark blue	1.75 - 2.25"	82"	49,000
ZCS1750	Yellow	2.00 - 2.50"	72"	49,000
ZCS1751	Orange	2.50 - 3.00"	72"	49,000
ZCS1752	Aluminum	3.00 - 3.50"	74"	49,000
ZCS1753	Light green	3.50 - 4.00"	76"	49,000

## A Type - High Strength Cable Grip

They can be used for aluminum conductor or for pulling rope; color coded for ease of identification; this Slingco product is the strongest cable grip we produce. We recommend using the Slingco Feed Tube when inserting rope into A Type cable grips.



Slingco part no.	Color	Conductor Diameter	Rope Diameter	Overall length	Lattice length	Approx breaking strength (lbs)
Galvanized						
ZCS1799	Black	0.19 - 0.40"	0.25 - 0.65"	40"	28"	7,000
ZCS3020	Purple	0.25 - 0.40"	0.30 - 0.40"	40.5"	30"	10,000
ZCS1800	Dark green	0.40 - 0.63"	0.50 - 0.90"	55"	41"	14,000
ZCS3522	Gray	0.44 - 0.63"	0.44 - 0.90"	123"	109"	20,000
ZCS1801	Red	0.63 - 0.88"	0.75 - 1.10"	74"	58"	20,000
ZCS1802	Dark blue	0.88 - 1.13"	1.00 - 1.50"	87"	68"	30,700
ZCS1803	Yellow	1.13 - 1.38"	1.25 - 1.70"	112"	90"	47,000
ZCS1804	Aluminum	1.38 - 1.90"	1.50 - 2.10"	121"	96"	67,000

# Heavy Duty Cable Grips

## R Type - Rotating Multi-Weave Cable Grip

Like the MU type, the rotating eye cable grip has a triple weave construction and is color coded for ease of identification. In addition, its steel forged revolving head is ideal for connecting to Slingco swivels and shackles.

Warning: The Slingco R Type Rotating Eye Cable Grip does not revolve under load.



Slingco part no.	Color	Size range	Revolving eye diameter	Lattice length	Approx breaking strength (lbs)
Galvanized					
ZCS2177	Dark green	0.25 - 0.50"	0.875"	31"	7,000
ZCS2178	Brown	0.50 - 0.75"	1.00"	45"	10,500
ZCS2179	Light blue	0.75 - 1.00"	1.00"	43"	14,100
ZCS2180	Gold	1.00 - 1.25"	1.625"	65"	25,000
ZCS2181	Black	1.25 - 1.50"	1.875"	59"	31,000
ZCS2182	Red	1.50 - 1.75"	1.875"	82"	31,000
ZCS2183	Dark blue	1.75 - 2.25"	1.875"	82"	43,000
ZCS2779	Yellow	2.00 - 2.50"	1.875"	72"	43,000
ZCS2780	Orange	2.50 - 3.00"	1.875"	72"	43,000
ZCS2781	Aluminum	3.00 - 3.50"	1.875"	74"	43,000
ZCS2782	Light green	3.50 - 4.00"	1.875"	76"	43,000

## ST Type - Single Eye Double Weave Cable Grip

This Slingco grip features a double weave construction for medium to heavy pulling applications in underground installations.



Slingco part no.	Size range	Lattice length	Approx breaking strength (lbs)
Galvanized			
ZCS2511	0.50 - 0.62"	21"	4,500
ZCS2512	0.62 - 0.75"	24"	5,600
ZCS2513	0.75 - 1.00"	24"	6,800
ZCS2514	1.00 - 1.50"	24"	9,600
ZCS2515	1.50 - 2.00"	24"	16,400
ZCS2516	2.00 - 2.50"	24"	18,500
ZCS2517	2.50 - 3.00"	24"	24,500
ZCS2518	3.00 - 3.50"	24"	24,500
ZCS2519	3.50 - 4.00"	26"	31,000
Longer length			
ZCS2520	0.75 - 1.00"	36"	6,800
ZCS2521	1.00 - 1.50"	36"	9,600
ZCS2522	1.50 - 2.00"	36"	16,400
ZCS2523	2.00 - 2.50"	36"	18,500
ZCS2524	2.50 - 3.00"	36"	24,500
ZCS2777	3.00 - 3.50"	36"	24,500
ZCS2778	3.50 - 4.00"	40"	31,000

# Heavy Duty Cable Grips

## RT Type - Rotating Eye Double Weave Cable Grip

Double weave construction for medium to heavy pulling applications in underground installations. Additionally its steel forged revolving head is ideal for connecting to Slingco swivels and shackles. Warning: The Slingco RT Type Rotating Eye Cable Grip does not revolve under load.



Slingco part no.	Size range	Revolving eye diameter	Lattice length	Approx breaking strength (lbs)
Galvanized				
ZCS2734	0.50 - 0.62"	0.875"	11"	5,600
ZCS2735	0.62 - 0.75"	0.875"	11"	6,800
ZCS2736	0.75 - 1.00"	1.00"	20"	6,800
ZCS2738	1.00 - 1.50"	1.375"	21"	12,800
ZCS2739	1.50 - 2.00"	1.375"	25"	16,400
ZCS2740	2.00 - 2.50"	1.625"	26"	27,200
ZCS2741	2.50 - 3.00"	1.875"	28"	33,000
ZCS2742	3.00 - 3.50"	1.875"	30"	41,000
ZCS2743	3.50 - 4.00"	1.875"	32"	43,000
ZCS2744	4.00 - 4.50"	1.875"	33"	43,000
Extra long				
ZCS2745	0.50 - 0.62"	0.875"	16"	5,600
ZCS2746	0.62 - 0.75"	0.875"	16"	6,800
ZCS2747	0.75 - 1.00"	1.00"	32"	6,800
ZCS2748	1.00 - 1.50"	1.375"	33"	12,800
ZCS2749	1.50 - 2.00"	1.375"	34"	16,400
ZCS2750	2.00 - 2.50"	1.375"	36"	27,300
ZCS2751	2.50 - 3.00"	1.625"	38"	33,000
ZCS2752	3.00 - 3.50"	1.875"	39"	41,000
ZCS2753	3.50 - 4.00"	1.875"	41"	43,000
ZCS2754	4.00 - 4.50"	1.875"	42"	43,000
ZCS2755	4.50 - 5.00"	1.875"	58"	43,000
ZCS2756	5.00 - 6.00"	1.875"	60"	43,000
ZCS2757	6.00 - 7.00"	1.875"	66"	43,000

## Splicing Grip - Multi Weave Cable Grip

Slingco Splicing Grips are made from multi weave construction and are our strongest device for temporary splicing of conductor and wire ropes as well as cable reinforcements.



Slingco part no.	Color	Size range	Lattice length	Approx breaking strength (lbs)
Galvanized				
ZCS2552	Dark green	0.25 - 0.50"	63"	7,000
ZCS2553	Brown	0.50 - 0.75"	90"	10,500
ZCS2446	Light blue	0.75 - 1.00"	90"	14,100
ZCS2554	Gold	1.00 - 1.25"	130"	25,000
ZCS2547	Black	1.25 - 1.50"	130"	31,000
ZCS2555	Red	1.50 - 1.75"	164"	31,000
ZCS2556	Dark blue	1.75 - 2.25"	164"	40,000

# Light-Medium Duty Cable Grips

## SE Type - Single Eye Cable Grip

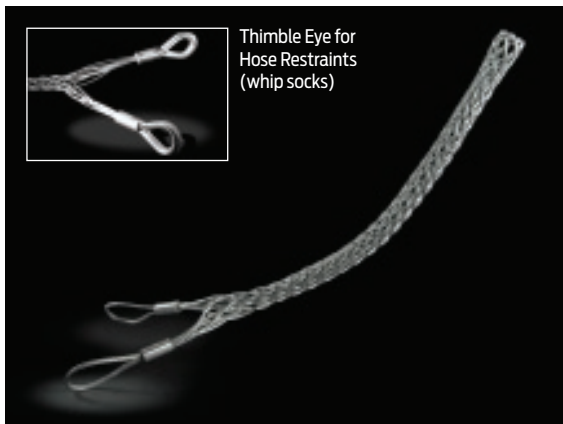
Ideal for pulling light to medium loads; typical application - 'standard pull' of single or group of cables, where additional support is unnecessary, or if used in conjunction with other cable grips.



Slingco part no.	Size range	Lattice weave	Lattice length	Overall length	Approx breaking strength (lbs)
Galvanized					
ZCS0320	0.25 - 0.50"	Single	9"	12"	1,680
ZCS0321	0.50 - 0.75"	Single	14"	17"	2,240
ZCS0322	0.75 - 1.00"	Single	16"	20"	5,600
ZCS0323	1.00 - 1.50"	Single	18"	24"	7,840
ZCS0324	1.50 - 2.00"	Double	21"	29"	11,200
ZCS0325	2.00 - 2.50"	Double	24"	34"	11,200
ZCS0326	2.50 - 3.50"	Double	27"	39"	13,440
ZCS0327	3.50 - 4.50"	Double	27"	39"	15,680
ZCS0821	4.50 - 5.50"	Double	27"	39"	15,680
Stainless Steel					
ZCS1380	0.25 - 0.50"	Single	9"	12"	1,344
ZCS1523	0.50 - 0.75"	Single	14"	17"	1,792
ZCS1373	0.75 - 1.00"	Single	16"	20"	4,480
ZCS1952	1.00 - 1.50"	Single	18"	24"	6,272
ZCS1381	1.50 - 2.00"	Double	21"	29"	8,960
ZCS1977	2.00 - 2.50"	Double	24"	34"	8,960
ZCS1979	2.50 - 3.50"	Double	27"	39"	10,752
ZCS1980	3.50 - 4.50"	Double	27"	39"	12,544
ZCS1981	4.50 - 5.50"	Double	27"	39"	12,544

## DE Type - Double Eye Cable Grip

Ideal for pulling light to medium loads; the main advantage over the single eye cable grip is the cable being pulled can be passed through the grip, several cable grips can be used to support over a calculated distance.



Slingco part no.	Size range	Lattice weave	Lattice length	Overall length	Approx breaking strength (lbs)
Galvanized					
ZCS0305	0.25 - 0.50"	Single	9"	12"	1,680
ZCS0306	0.50 - 0.75"	Single	14"	17"	2,240
ZCS0307	0.75 - 1.00"	Single	16"	20"	5,600
ZCS0308	1.00 - 1.50"	Single	18"	24"	7,840
ZCS0309	1.50 - 2.00"	Double	21"	29"	11,200
ZCS0310	2.00 - 2.50"	Double	24"	34"	11,200
ZCS0311	2.50 - 3.50"	Double	27"	39"	13,440
ZCS0312	3.50 - 4.50"	Double	27"	39"	15,680
ZCS0878	4.50 - 5.50"	Double	27"	39"	15,680
Stainless Steel					
ZCS0823	0.25 - 0.50"	Single	9"	12"	1,344
ZCS1007	0.50 - 0.75"	Single	14"	17"	1,792
ZCS0931	0.75 - 1.00"	Single	16"	20"	4,480
ZCS1265	1.00 - 1.50"	Single	18"	24"	6,272
ZCS1252	1.50 - 2.00"	Double	21"	29"	8,960
ZCS0319	2.00 - 2.50"	Double	24"	34"	8,960
ZCS0213	2.50 - 3.50"	Double	27"	39"	10,752
ZCS0332	3.50 - 4.50"	Double	27"	39"	12,544
ZCS1982	4.50 - 5.50"	Double	27"	39"	12,544

# Light-Medium Duty Cable Grips

## L Type - Lace Up Cable Grip

Ideal for pulling light to medium loads; the L-type is fitted to the cable being pulled by stitching it together, like a football. Mainly used where a 'typical' cable grip can't be fitted over a connector at the end of a cable.



Slingco part no.	Size range	Lattice weave	Lattice length	Overall length	Approx breaking strength (lbs)
Galvanized					
ZCS1157	0.25 - 0.50"	Single	9"	12"	1,680
ZCS0872	0.50 - 0.75"	Single	14"	17"	2,240
ZCS0871	0.75 - 1.00"	Single	16"	20"	5,600
ZCS0328	1.00 - 1.50"	Single	18"	24"	7,840
ZCS0329	1.50 - 2.00"	Double	21"	29"	11,200
ZCS0330	2.00 - 2.50"	Double	24"	34"	11,200
ZCS0331	2.50 - 3.50"	Double	27"	39"	13,440
ZCS0853	3.50 - 4.50"	Double	27"	39"	15,680
ZCS1109	4.50 - 5.50"	Double	27"	39"	15,680
Stainless Steel					
ZCS1983	0.25 - 0.50"	Single	9"	12"	1,344
ZCS1796	0.50 - 0.75"	Single	14"	17"	1,792
ZCS1789	0.75 - 1.00"	Single	16"	20"	4,480
ZCS1797	1.00 - 1.50"	Single	18"	24"	6,272
ZCS1984	1.50 - 2.00"	Double	21"	29"	8,960
ZCS2466	2.00 - 2.50"	Double	24"	34"	8,960
ZCS0816	2.50 - 3.50"	Double	27"	39"	10,752
ZCS1356	3.50 - 4.50"	Double	27"	39"	12,544
ZCS1355	4.50 - 5.50"	Double	27"	39"	12,544
ZCS2833	4.50 - 5.50"	Triple	27"	39"	16,128

## OS Type - Offset Eye Cable Grip

Similar to the S Type single eye cable grip, but for use when offset positioning is required and the cable passes completely through the cable grip.



Slingco part no.	Size range	Lattice weave	Lattice length	Overall length	Approx breaking strength (lbs)
Galvanized					
ZCS1860	0.25 - 0.50"	Single	9"	12"	1,680
ZCS1861	0.50 - 0.75"	Single	14"	17"	2,240
ZCS1862	0.75 - 1.00"	Single	16"	20"	5,600
ZCS1863	1.00 - 1.50"	Single	18"	24"	7,840
ZCS1864	1.50 - 2.00"	Double	21"	29"	11,200
ZCS1865	2.00 - 2.50"	Double	24"	34"	11,200
ZCS1866	2.50 - 3.50"	Double	27"	39"	13,440
ZCS1867	3.50 - 4.50"	Double	27"	39"	15,680
ZCS1974	4.50 - 5.50"	Double	27"	39"	15,680
Stainless Steel					
ZCS1986	0.25 - 0.50"	Single	9"	12"	1,344
ZCS1987	0.50 - 0.75"	Single	14"	17"	1,792
ZCS1988	0.75 - 1.00"	Single	16"	20"	4,480
ZCS1989	1.00 - 1.50"	Single	18"	24"	6,272
ZCS1990	1.50 - 2.00"	Double	21"	29"	8,960
ZCS1991	2.00 - 2.50"	Double	24"	34"	8,960
ZCS1992	2.50 - 3.50"	Double	27"	39"	10,752
ZCS1993	3.50 - 4.50"	Double	27"	39"	12,544
ZCS1994	4.50 - 5.50"	Double	27"	39"	12,544

# Light-Medium Duty Cable Grips

## Open Ended Cable Grip

Ideal for joining two cables to form a continuous loop. Typical application: replacement of elevator cables, where the old cable would be attached to the new one, and the cable then fed around with ease.



Slingco part no.	Size range	Lattice weave	Lattice length	Approx breaking strength (lbs)
Galvanized				
ZCS0313	0.25 - 0.50"	Single	15"	1,680
ZCS0314	0.50 - 0.75"	Single	24"	2,240
ZCS0315	0.75 - 1.00"	Single	28"	5,600
ZCS0316	1.00 - 1.50"	Single	32"	7,840
ZCS0317	1.50 - 2.00"	Double	36"	11,200
ZCS0318	2.00 - 2.50"	Double	42"	11,200
ZCS1158	2.50 - 3.50"	Double	48"	13,440
ZCS1159	3.50 - 4.50"	Double	54"	15,680
ZCS1975	4.50 - 5.50"	Double	54"	15,680
Stainless Steel				
ZCS1995	0.25 - 0.50"	Single	15"	1,344
ZCS1996	0.50 - 0.75"	Single	24"	1,792
ZCS1997	0.75 - 1.00"	Single	28"	4,480
ZCS1998	1.00 - 1.50"	Single	32"	6,272
ZCS1999	1.50 - 2.00"	Double	36"	8,960
ZCS2000	2.00 - 2.50"	Double	42"	8,960
ZCS2001	2.50 - 3.50"	Double	48"	10,752
ZCS2002	3.50 - 4.50"	Double	54"	12,544
ZCS2003	4.50 - 5.50"	Double	54"	12,544

## Fiber Optic Pulling Grip

Dual weave design manufactured from galvanized wire rope. Used for the installation of fiber optic cables for either overhead or underground applications.



Slingco part no.	Size range	Overall length	Lattice length	Approx breaking strength (lbs)
Galvanized				
ZCS2008	0.11 - 0.23"	18"	11"	950
ZCS2009	0.21 - 0.36"	22"	15"	1,650
ZCS2010	0.32 - 0.49"	27"	19"	2,200
ZCS2011	0.42 - 0.62"	29"	20"	2,750
ZCS2012	0.53 - 0.75"	32"	23"	3,700
ZCS2013	0.64 - 0.88"	34"	25"	4,250
ZCS2014	0.75 - 1.00"	37"	27"	4,250

# Non-Metallic (Aramid) Cable Grips

## NS – Non-Metallic (Aramid) Single Eye Cable Grip

Ideal for use in water, fiber optic applications, offshore or for a multitude of uses in the electrical industry; dramatically improved weight to break ratio. Slingco's non-metallic pulling grips are made of a high-strength, non-metallic aramid fiber; they are suitable for pulling both single cable and cable bundles.



Slingco part no.	Size range	Lattice length	Approx breaking strength (lbs)
Single eye single weave non-metallic grip			
ZCS1040	0.38 - 0.75"	24"	2,460
ZCS1022	0.75 - 1.25"	24"	3,580
ZCS2923	1.00 - 1.50"	24"	3,580
ZCS1041	1.25 - 1.50"	24"	4,920
ZCS1042	1.50 - 2.00"	24"	5,820
Single eye double weave non-metallic grip			
ZCS1023	1.25 - 1.50"	24"	9,860
ZCS1024	1.50 - 2.00"	24"	11,880
ZCS1179	2.00 - 2.50"	24"	15,900
ZCS1180	2.50 - 3.00"	24"	15,900
ZCS1181	3.00 - 4.00"	24"	15,900

## ND – Non-Metallic (Aramid) Double Eye Cable Grip

Ideal for use in water, fiber optic applications, offshore or for a multitude of uses in the electrical industry; dramatically improved weight to break ratio. Slingco's non-metallic pulling grips are made of a high-strength, non-metallic aramid fiber; they are suitable for pulling both single cable and cable bundles.



Slingco part no.	Size range	Lattice length	Approx breaking strength (lbs)
Double eye single weave non-metallic grip			
ZCS1148	0.38 - 0.75"	24"	2,460
ZCS1176	0.75 - 1.25"	24"	3,580
ZCS2922	1.00 - 1.50"	24"	3,580
ZCS1177	1.25 - 1.50"	24"	4,920
ZCS1178	1.50 - 2.00"	24"	5,820
Double eye double weave non-metallic grip			
ZCS1182	1.25 - 1.50"	24"	9,860
ZCS1183	1.50 - 2.00"	24"	11,880
ZCS1184	2.00 - 2.50"	24"	15,900
ZCS1185	2.50 - 3.00"	24"	15,900
ZCS1186	3.00 - 4.00"	24"	15,900

# Non-Metallic (Aramid) Cable Grips / Cable Support Grips

## NO - Non-Metallic (Aramid) Offset Eye Cable Grip

Similar to the single eye cable grip described above, but for use when offset positioning is required and the cable passes completely through the cable grip.

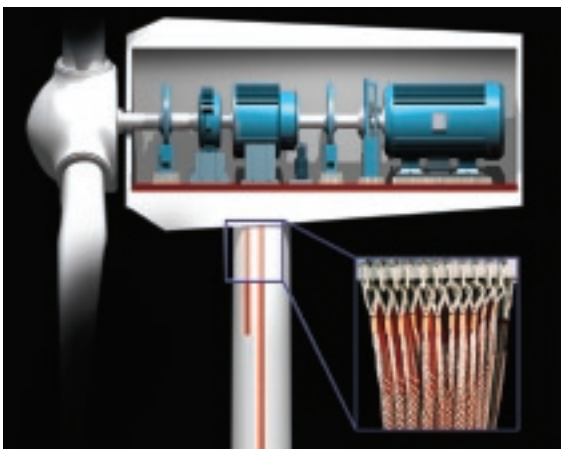


Slingco part no.	Size range	Lattice length	Approx breaking strength (lbs)
Offset eye single weave non-metallic grip			
ZCS2810	0.38 - 0.75"	24"	2,460
ZCS2811	0.75 - 1.25"	24"	3,580
ZCS2921	1.00 - 1.50"	24"	3,580
ZCS2812	1.25 - 1.50"	24"	4,920
ZCS2813	1.50 - 2.00"	24"	5,820
Offset eye double weave non-metallic grip			
ZCS2814	1.25 - 1.50"	24"	9,860
ZCS2815	1.50 - 2.00"	24"	11,880
ZCS2816	2.00 - 2.50"	24"	15,900
ZCS2817	2.50 - 3.00"	24"	15,900
ZCS2818	3.00 - 4.00"	24"	15,900

## Wind Turbine Support Grip - Heavy Duty Thimble Offset Eye



316 Stainless Steel cable support and control for inside the wind turbine. Rounded copper ferrules and reduced cable contact for high vibration environments.



Slingco part no.	Size range	Lattice length	Approx breaking strength (lbs)
ZCS2844	0.31 - 0.40"	25"	1,485
ZCS2845	0.40 - 0.60"	26"	2,295
ZCS2846	0.60 - 0.80"	28"	2,900
ZCS2847	0.80 - 0.99"	29"	4,550
ZCS2848	0.99 - 1.19"	29"	5,450
ZCS2849	1.19 - 1.58"	31"	7,800
ZCS2850	1.58 - 1.98"	39"	10,750
ZCS2851	1.98 - 2.37"	39"	10,750
ZCS2852	2.37 - 2.77"	47"	14,000
ZCS2853	2.77 - 3.55"	47"	14,000
ZCS2854	3.55 - 4.33"	47"	18,000

# Cable Support Grips

## Single Eye Support Grip

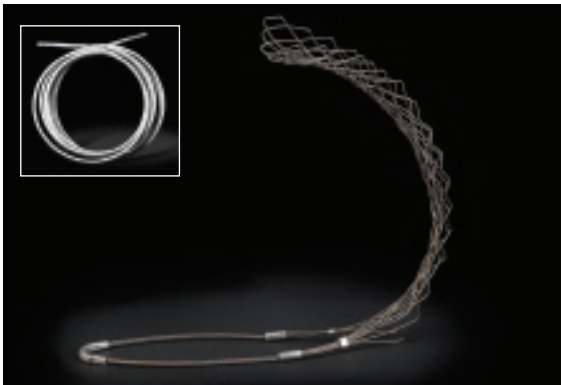
Slingco offers a range of support grips, in 304 Stainless Steel, designed to support the cable weight as it hangs vertically or horizontally. They are the ideal solution for taking the strain off connectors, terminators and wall sockets and are available in various designs to suit most applications.



Slingco part no.	Size range	Lattice length	Approx breaking strength (lbs)
ZCSI893	0.50 - 0.63"	9.7"	567
ZCSI894	0.63 - 0.75"	9.7"	890
ZCSI895	0.75 - 1.00"	13"	1,040
ZCSI896	1.00 - 1.25"	13.5"	1,700
ZCSI897	1.25 - 1.50"	15"	1,700
ZCSI898	1.50 - 1.75"	16.5"	1,700
ZCSI899	1.75 - 2.00"	20"	2,300
ZCSI900	2.00 - 2.50"	21"	3,400
ZCSI901	2.50 - 3.00"	24"	3,400
ZCSI902	3.00 - 3.50"	26"	5,000
ZCSI903	3.50 - 4.00"	29"	5,000

## Single Eye Support Grip - Lace up

Slingco offers a range of support grips, in 304 Stainless Steel, designed to support the cable weight as it hangs vertically or horizontally. They are the ideal solution for taking the strain off connectors and wall sockets and are available in 4 different designs to suit most applications.

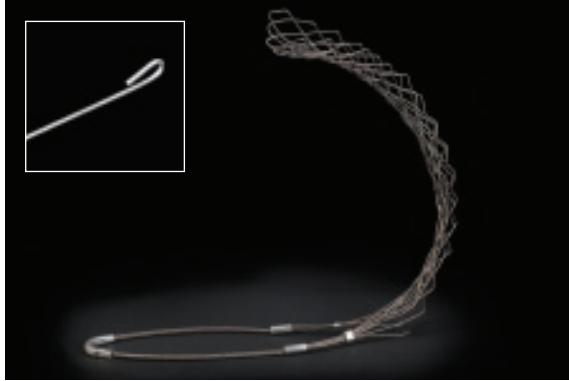


Slingco part no.	Size range	Lattice length	Approx breaking strength (lbs)
ZCSI904	0.50 - 0.63"	9.7"	567
ZCSI905	0.63 - 0.75"	9.7"	890
ZCSI906	0.75 - 1.00"	13"	1,040
ZCSI907	1.00 - 1.25"	13.5"	1,700
ZCSI908	1.25 - 1.50"	15"	1,700
ZCSI909	1.50 - 1.75"	16.5"	1,700
ZCSI910	1.75 - 2.00"	20"	2,300
ZCSI911	2.00 - 2.50"	21"	3,400
ZCSI912	2.50 - 3.00"	24"	3,400
ZCSI913	3.00 - 3.50"	26"	5,000
ZCSI914	3.50 - 4.00"	29"	5,000

# Cable Support Grips

## Single Eye Support Grip - Rod Closing

Similar to the lace up grip, in 304 Stainless Steel, but in this design it is closed by inserting a metal rod down the length of the grip.



Slingco part no.	Size range	Lattice length	Approx breaking strength (lbs)
ZCS2362	0.50 - 0.63"	9.7"	567
ZCS2363	0.63 - 0.75"	9.7"	890
ZCS2162	0.75 - 1.00"	13"	1,040
ZCS2163	1.00 - 1.25"	13.5"	1,700
ZCS2164	1.25 - 1.50"	15"	1,700
ZCS2165	1.50 - 1.75"	16.5"	1,700
ZCS2166	1.75 - 2.00"	20"	2,300
ZCS2167	2.00 - 2.50"	21"	3,400
ZCS2168	2.50 - 3.00"	24"	3,400
ZCS2169	3.00 - 3.50"	26"	5,000
ZCS2372	3.50 - 4.00"	29"	5,000

## Double Eye Support Grip

Slingco offers a range of support grips, in 304 Stainless Steel, designed to support the cable weight as it hangs vertically or horizontally. They are the ideal solution for taking the strain off connectors and wall sockets and are available in four different designs to suit most applications.

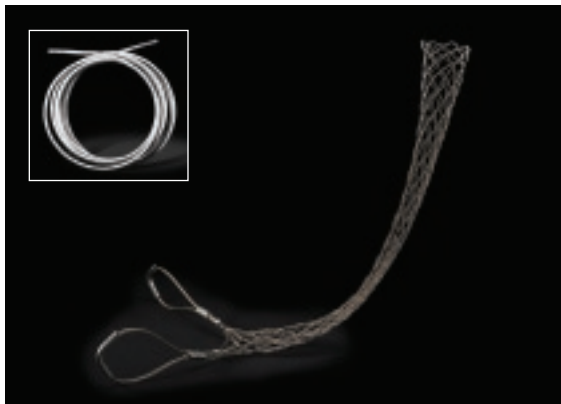


Slingco part no.	Size range	Lattice length	Approx breaking strength (lbs)
ZCS2038	0.50 - 0.63"	9.7"	512
ZCS2039	0.63 - 0.75"	9.7"	740
ZCS2040	0.75 - 1.00"	13"	1,000
ZCS2041	1.00 - 1.25"	15"	1,540
ZCS2042	1.25 - 1.50"	16.5"	1,540
ZCS2043	1.50 - 1.75"	20"	2,010
ZCS2044	1.75 - 2.00"	21"	3,230
ZCS2045	2.00 - 2.50"	24"	3,230
ZCS2046	2.50 - 3.00"	26"	4,000
ZCS2047	3.00 - 3.50"	29"	4,000
ZCS2048	3.50 - 4.00"	29"	4,000

# Cable Support Grips

## Double Eye Split Mesh Lace Closing Cable Support Grip

Double eye split mesh lace closing, in 304 Stainless Steel, for secure attachment and support where the cable end is not accessible.



Slingco part no.	Size range	Lattice length	Approx breaking strength (lbs)
ZCS2998	0.50 - 0.62"	10"	530
ZCS2999	0.63 - 0.74"	10"	790
ZCS3000	0.75 - 0.99"	13"	1,020
ZCS3001	1.00 - 1.24"	14"	1,610
ZCS3002	1.25 - 1.49"	15"	1,610
ZCS3003	1.50 - 1.74"	17"	1,610
ZCS3004	1.75 - 1.99"	19"	2,150
ZCS3005	2.00 - 2.49"	21"	3,260
ZCS3006	2.50 - 2.99"	23"	3,260
ZCS3007	3.00 - 3.49"	25"	4,900
ZCS3008	3.50 - 3.99"	27"	4,900

## Double Eye Split Mesh Rod Closing Cable Support Grip

Double eye split mesh rod closing, in 304 Stainless Steel, for secure attachment and support where the cable end is not accessible.



Slingco part no.	Size range	Lattice length	Approx breaking strength (lbs)
ZCS3009	0.50 - 0.62"	8.5"	790
ZCS3010	0.63 - 0.74"	8.5"	790
ZCS3011	0.75 - 0.99"	10.5"	1,020
ZCS3012	1.00 - 1.24"	12.5"	1,610
ZCS3013	1.25 - 1.49"	14.5"	1,610
ZCS3014	1.50 - 1.74"	15.5"	1,610
ZCS3015	1.75 - 1.99"	16.5"	2,150
ZCS3016	2.00 - 2.49"	19.5"	3,260
ZCS3017	2.50 - 2.99"	21.5"	3,260
ZCS3018	3.00 - 3.49"	23.5"	5,750
ZCS3019	3.50 - 3.99"	25.5"	5,750

# Cable Support Grips

## Offset Eye Support Grip

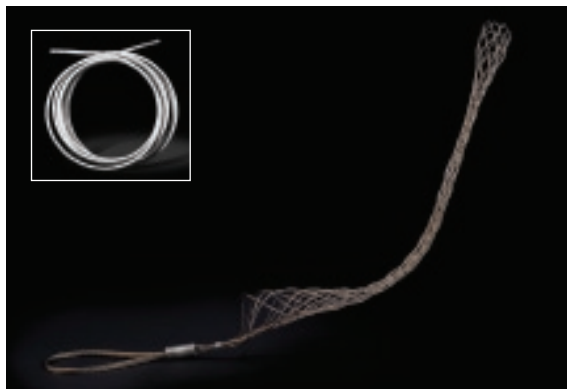
Slingco offers a range of support grips, in 304 Stainless Steel, designed to support the cable weight as it hangs vertically or horizontally. They are the ideal solution for taking the strain off connectors and wall sockets and are available in 4 different designs to suit most applications.



Slingco part no.	Size range	Lattice length	Approx breaking strength (lbs)
ZCSI915	0.50 - 0.63"	9.7"	512
ZCSI916	0.63 - 0.75"	9.7"	740
ZCSI917	0.75 - 1.00"	13"	1,000
ZCSI918	1.00 - 1.25"	13.5"	1,540
ZCSI919	1.25 - 1.50"	15"	1,540
ZCSI920	1.50 - 1.75"	16.5"	1,540
ZCSI921	1.75 - 2.00"	20"	2,010
ZCSI922	2.00 - 2.50"	21"	3,230
ZCSI923	2.50 - 3.00"	24"	3,230
ZCSI924	3.00 - 3.50"	26"	4,000
ZCSI925	3.50 - 4.00"	29"	4,000

## Offset Eye Lace Up Cable Support Grip

This grip, in 304 Stainless Steel, is ideal for several support points along the same cable when the cable ends are not accessible.



Slingco part no.	Size range	Lattice length	Approx breaking strength (lbs)
ZCSI926	0.50 - 0.63"	10"	500
ZCSI927	0.63 - 0.75"	10"	750
ZCSI928	0.75 - 1.00"	13"	950
ZCSI929	1.00 - 1.25"	14"	1,500
ZCSI930	1.25 - 1.50"	15"	1,500
ZCSI931	1.50 - 1.75"	17"	1,500
ZCSI932	1.75 - 2.00"	19"	2,000
ZCSI933	2.00 - 2.50"	21"	2,150
ZCSI934	2.50 - 3.00"	23"	2,150
ZCSI935	3.00 - 3.50"	25"	3,800
ZCSI936	3.50 - 4.00"	27"	3,800

# Cable Support Grips

## Offset Eye Rod Closing Cable Support Grip

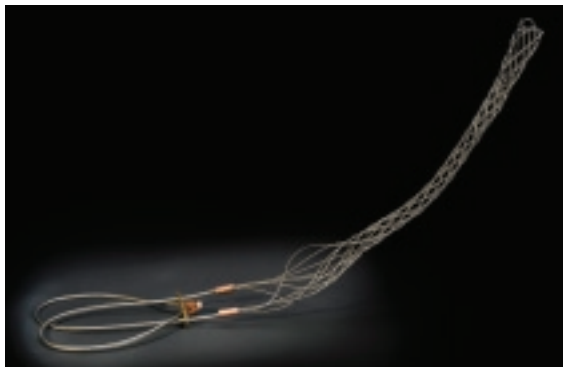
Ideal for several support points along the same cable when the cable ends are not accessible. Made from 304 Stainless Steel.



Slingco part no.	Size range	Lattice length	Approx breaking strength (lbs)
ZCS3031	0.50 - 0.62"	7"	500
ZCS3032	0.63 - 0.74"	9"	750
ZCS3033	0.75 - 0.99"	10"	950
ZCS3034	1.00 - 1.24"	12"	1,500
ZCS3035	1.25 - 1.49"	14"	1,500
ZCS3036	1.50 - 1.74"	15"	1,500
ZCS3037	1.75 - 1.99"	16"	2,000
ZCS3038	2.00 - 2.49"	19"	3,100
ZCS3039	2.50 - 2.99"	20"	3,100
ZCS3040	3.00 - 3.49"	21"	4,300
ZCS3041	3.50 - 3.99"	21"	4,900

## Universal Eye Closed Mesh Cable Support Grip

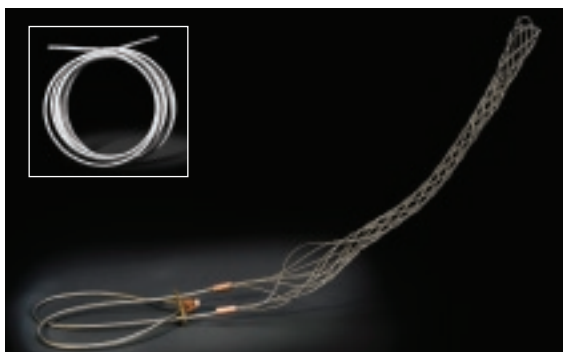
Fitted with an adjustable eye for easy and secure attachment, where the end of the cable can be inserted in to the support grip. Made from 304 Stainless Steel.



Slingco part no.	Size range	Lattice length	Approx breaking strength (lbs)
ZCS2664	0.50 - 0.63"	10"	530
ZCS2665	0.63 - 0.75"	10"	790
ZCS2666	0.75 - 1.00"	13"	1,020
ZCS2667	1.00 - 1.25"	14"	1,610
ZCS2324	1.25 - 1.50"	15"	1,610
ZCS2668	1.50 - 1.75"	17"	1,610
ZCS2669	1.75 - 2.00"	19"	2,150
ZCS2670	2.00 - 2.50"	21"	3,260
ZCS2671	2.50 - 3.00"	23"	3,260

## Universal Eye Split Mesh Lace Closing Cable Support Grip

Fitted with an adjustable eye for easy and secure attachment, where the end of the cable is not accessible. Made from 304 Stainless Steel.

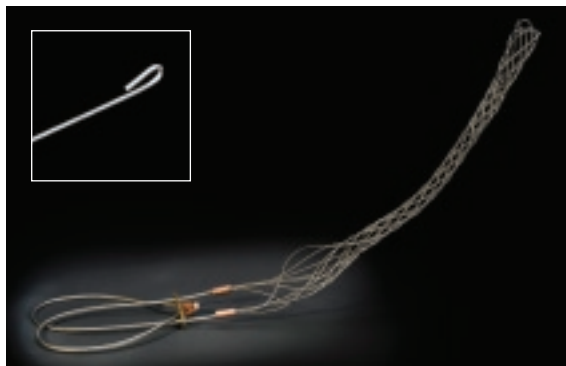


Slingco part no.	Size range	Lattice length	Approx breaking strength (lbs)
ZCS2672	0.50 - 0.63"	10"	530
ZCS2673	0.63 - 0.75"	10"	790
ZCS2674	0.75 - 1.00"	13"	1,020
ZCS2675	1.00 - 1.25"	14"	1,610
ZCS2676	1.25 - 1.50"	15"	1,610
ZCS2677	1.50 - 1.75"	17"	1,610
ZCS2678	1.75 - 2.00"	19"	2,150
ZCS2679	2.00 - 2.50"	21"	3,260
ZCS2680	2.50 - 3.00"	23"	3,280
ZCS2681	3.00 - 3.50"	25"	4,900
ZCS2682	3.50 - 4.00"	27"	4,900

# Cable Support Grips

## Universal Eye Split Mesh Rod Closing Support Cable Grips

Fitted with an adjustable eye for easy and secure attachment, where the end of the cable is not accessible. Made from 304 Stainless Steel.



Slingco part no.	Size range	Lattice length	Approx breaking strength (lbs)
ZCS2683	0.50 - 0.63"	8.5"	530
ZCS2684	0.63 - 0.75"	8.5"	790
ZCS2685	0.75 - 1.00"	10.5"	1,020
ZCS2686	1.00 - 1.25"	12.5"	1,610
ZCS2687	1.25 - 1.50"	14.5"	1,610
ZCS2688	1.50 - 1.75"	15.5"	1,610

## Slingco - A company you can rely on

**F**or almost forty years Slingco has been working around the globe to serve the needs of the world's core industries - Mining, Oil and Gas, Architecture, Engineering, Utilities, Government and Aerospace. Slingco grips can be found in such diverse locations as almost a mile underground in Saskatchewan, Canada and 150 feet up inside a wind turbine in the North Sea.

### Slingco – A company that works with you, not just for you

Our in-house design and engineering team works with you to create the solution that fits your application.

### Slingco – Quality and Safety

Slingco is depended on by both government and private sector customers internationally, so you can be sure both of the quality of our products and the reliability of our customer service.

### Slingco – Delivering what you need, when you need it

Over 95% of orders ship same day from our stocked distribution facility in Fayetteville, Georgia.

Find out more at [www.slingco.com](http://www.slingco.com)

When you next need a company *you* can rely on, email [sales@cablegrip.com](mailto:sales@cablegrip.com) or call us on 888 685 9478.

# Conduit Riser Cable Grips

## Conduit Riser Cable Grip

A single weave grip, with a support ring, designed for the support of electrical cabling.



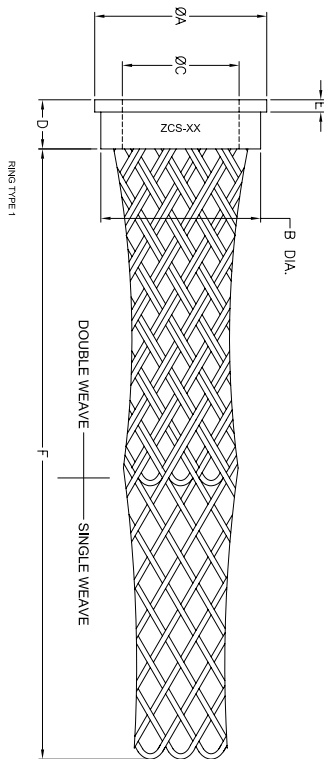
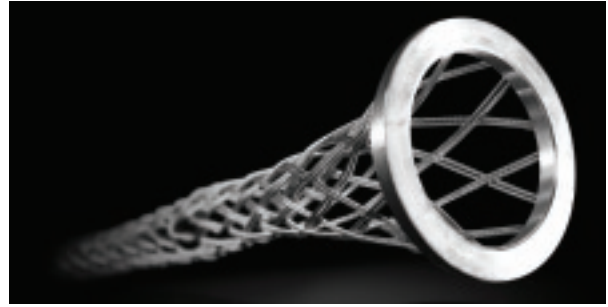
Slingco comparison reference numbers and approximate breaking strengths (lbs)											
Cable sizes diameter											
	0.50 - 0.63"	0.63 - 0.75"	0.75 - 1.00"	1.00 - 1.25"	1.25 - 1.50"	1.50 - 1.75"	1.75 - 2.00"	2.00 - 2.50"	2.50 - 3.00"	3.00 - 3.50"	3.5 - 4.0"
Length											
Conduit size	8"	9"	11"	12"	12"	14"	15"	17"	18"	20"	21"
0.75"	ZCS2690 530										
1.00"	ZCS2691 490	ZCS2694 790									
1.25"	ZCS2692 450	ZCS2695 740	ZCS2698 1030								
1.50"		ZCS2696 690	ZCS2699 970	ZCS2701 1610							
2.00"	ZCS2693 370	ZCS2697 640	ZCS2700 920	ZCS2702 1520	ZCS2704 1610						
2.50"					ZCS2705 1510	ZCS2707 1610	ZCS2708 2150				
3.00"				ZCS2703 1340	ZCS2706 1400	ZCS2709 1490	ZCS2710 1990	ZCS2711 3260			
3.50"								ZCS2714 2970	ZCS2716 3260		
4.00"							ZCS2712 1670	ZCS2713 2680	ZCS2715 2890	ZCS2717 4080	
5.00"								ZCS2719 2150	ZCS2721 2860	ZCS2723 3130	
6.00"									ZCS2722 2245		

Slingco part no.	Type	Lattice length	Approx breaking strength (lbs)
ZCS2690	CR1	8"	530
ZCS2691	CR2	8"	490
ZCS2692	CR3	8"	450
ZCS2693	CR4	8"	370
ZCS2694	CR5	9"	790
ZCS2695	CR6	9"	740
ZCS2696	CR7	9"	690
ZCS2697	CR8	9"	640
ZCS2698	CR9	11"	1,030
ZCS2699	CR10	11"	970
ZCS2700	CR11	11"	920
ZCS2701	CR12	12"	1,610
ZCS2702	CR13	12"	1,510
ZCS2703	CR14	12"	1,400
ZCS2704	CR15	12"	1,610
ZCS2705	CR16	12"	1,510
ZCS2706	CR17	12"	1,400
ZCS2707	CR18	14"	1,610
ZCS2708	CR19	15"	2,150
ZCS2709	CR20	14"	1,490
ZCS2710	CR21	15"	1,990
ZCS2711	CR22	17"	3,260
ZCS2712	CR23	15"	1,670
ZCS2713	CR24	17"	2,680
ZCS2714	CR25	17"	2,970
ZCS2715	CR26	18"	2,890
ZCS2716	CR27	18"	3,260
ZCS2717	CR28	20"	4,080
ZCS2719	CR29	18"	2,150
ZCS2721	CR30	20"	2,860
ZCS2722	CR31	20"	2,245
ZCS2723	CR32	21"	3,130

# Stainless Steel Connector/Box Grips

## Stainless Steel Connector/Box Grip

Dual Weave – these grips are designed with a ring to support electric cabling from termination point to reduce strain on the connections.



Part No	Cable dia min	Cable dia max	Ø A	B	Ø C	D	E	F	Approx breaking strength (lbs)
ZCS2208	0.2"	0.25"	1.25"	1.12"	0.312"	0.281"	0.125"	3"	500
ZCS2209	0.31"	0.375"	1.25"	1.12"	0.437"	0.281"	0.125"	4"	750
ZCS2210	0.41"	0.5"	1.25"	1.12"	0.562"	0.281"	0.125"	5"	750
ZCS2211	0.5"	0.625"	1.25"	1.12"	0.687"	0.281"	0.125"	6"	1200
ZCS2212	0.61"	0.75"	1.25"	1.12"	0.812"	0.281"	0.125"	7"	1200
ZCS2213	0.71"	0.875"	1.25"	1.12"	0.937"	0.281"	0.125"	7½"	1000
ZCS2214	0.77"	0.937"	1.25"	1.12"	0.948"	0.219"	-	8"	800
ZCS2215	0.31"	0.375"	1.75"	1.62"	0.437"	0.281"	0.125"	4"	500
ZCS2216	0.41"	0.5"	1.75"	1.62"	0.562"	0.281"	0.125"	5"	750
ZCS2217	0.5"	0.625"	1.75"	1.62"	0.687"	0.281"	0.125"	6"	1000
ZCS2218	0.61"	0.75"	1.75"	1.62"	0.812"	0.281"	0.125"	7"	1000
ZCS2219	0.71"	0.875"	1.75"	1.62"	0.937"	0.281"	0.125"	7½"	1000
ZCS2220	0.82"	1"	1.75"	1.62"	1.062"	0.281"	0.125"	8½"	1000
ZCS2221	0.915"	1.125"	1.75"	1.62"	1.187"	0.281"	0.125"	9"	1500
ZCS2222	1.02"	1.25"	1.75"	1.62"	1.312"	0.281"	0.125"	10"	1000
ZCS2223	1.18"	1.437"	1.75"	1.62"	1.448"	0.219"	-	10½"	500
ZCS2224	0.5"	0.625"	2.25"	2.12"	0.687"	0.281"	0.125"	6"	1000
ZCS2225	0.71"	0.875"	2.25"	2.12"	0.937"	0.281"	0.125"	7½"	1000
ZCS2226	0.915"	1.125"	2.25"	2.12"	1.187"	0.281"	0.125"	9"	1500
ZCS2227	1.02"	1.25"	2.25"	2.12"	1.312"	0.281"	0.125"	10"	1800
ZCS2228	1.22"	1.5"	2.25"	2.12"	1.562"	0.281"	0.125"	11"	1800
ZCS2229	1.43"	1.75"	2.25"	2.12"	1.812"	0.281"	0.125"	13"	700
ZCS2230	1.18"	1.937"	2.25"	2.12"	1.948"	0.219"	-	14½"	350
ZCS2231	0.82"	1"	2.75"	2.62"	1.062"	0.281"	0.125"	8½"	1000
ZCS2232	1.02"	1.25"	2.75"	2.62"	1.312"	0.281"	0.125"	10"	1500
ZCS2233	1.22"	1.5"	2.75"	2.62"	1.562"	0.281"	0.125"	11"	1500
ZCS2234	1.43"	1.75"	2.75"	2.62"	1.812"	0.281"	0.125"	13"	1800
ZCS2235	1.64"	2"	2.75"	2.62"	2.062"	0.281"	0.125"	15"	1800
ZCS2236	1.84"	2.25"	2.75"	2.62"	2.312"	0.281"	0.125"	16"	1500
ZCS2237	2.062"	2.469"	2.75"	2.62"	2.489"	0.219"	-	17½"	1500
ZCS2238	1.375"	1.75"	3.25"	3.12"	1.812"	0.281"	0.125"	13"	2000
ZCS2239	1.75"	2"	3.25"	3.12"	2.062"	0.281"	0.125"	15"	2000
ZCS2240	1.84"	2.25"	3.25"	3.12"	2.312"	0.281"	0.125"	16"	2000
ZCS2241	2.125"	2.5"	3.25"	3.12"	2.562"	0.281"	0.125"	17½"	2000
ZCS2242	2.5"	2.875"	3.25"	3.12"	2.918"	0.219"	-	19"	2000

# Hose Restraint Cable Grips/Marine Cable Grips

Slingco manufactures extremely heavy duty grips for high pressure hose restraints or large underwater pulls, and various uses in oil & gas.

## Hose Restraint Cable Grips

Double eye, multi-weave hose restraints manufactured in 316 Stainless Steel.



## Marine Cable Grips

Single Eye, Double Eye, and Lace Up Double Eye Marine Cable Grips manufactured in galvanized wire rope.



### Hose Restraint Cable Grips

Slingco part no.	Range	Lattice length	Approx breaking strength (lbs)
ZCS3295	2.75 - 3.44"	57.5"	49,000
ZCS3254	3.00 - 3.50"	57.5"	39,200
ZCS3414	4.75 - 5.10"	78.0"	106,000

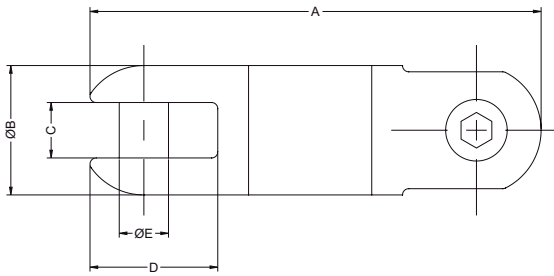
### Marine Cable Grips

Slingco part no.	Range	Lattice length	Approx breaking strength (lbs)
<b>Single eye</b>			
ZCS3525	4.00 - 5.00"	94.42"	100,000
ZCS3526	5.00 - 6.00"	94.42"	105,000
ZCS3527	6.00 - 8.00"	94.42"	112,000
ZCS3528	8.00 - 10.00"	94.42"	138,000
ZCS3529	10.00 - 12.00"	94.42"	138,000
ZCS3530	12.00 - 14.00"	94.42"	138,000+
ZCS3531	14.00 - 16.00"	118.11"	138,000+
ZCS3532	16.00 - 18.00"	131.79"	138,000+
ZCS3533	18.00 - 20.00"	157.48"	138,000+
ZCS3534	20.00 - 23.00"	196.85"	138,000+
<b>Double eye</b>			
ZCS3535	4.00 - 5.00"	94.42"	123,000
ZCS3536	5.00 - 6.00"	94.42"	123,000
ZCS3537	6.00 - 8.00"	94.42"	127,500
ZCS3538	8.00 - 10.00"	94.42"	156,500
ZCS3539	10.00 - 12.00"	94.42"	156,500
ZCS3540	12.00 - 14.00"	94.42"	156,500
ZCS3541	14.00 - 16.00"	118.11"	156,500+
ZCS3542	16.00 - 18.00"	131.79"	156,500+
ZCS3543	18.00 - 20.00"	157.48"	156,500+
ZCS3544	20.00 - 23.00"	196.85"	156,500+
<b>Lace up double eye</b>			
ZCS3545	4.00 - 5.00"	94.42"	123,000
ZCS3546	5.00 - 6.00"	94.42"	123,000
ZCS3547	6.00 - 8.00"	94.42"	127,500
ZCS3548	8.00 - 10.00"	94.42"	156,500
ZCS3549	10.00 - 12.00"	94.42"	156,500
ZCS3550	12.00 - 14.00"	94.42"	156,500+
ZCS3551	14.00 - 16.00"	118.11"	156,500+
ZCS3552	16.00 - 18.00"	131.79"	156,500+
ZCS3553	18.00 - 20.00"	157.48"	156,500+
ZCS3554	20.00 - 23.00"	196.85"	156,500+

# Line Pulling Swivels

## Line Pulling Swivel - Stainless Steel

Slingco Line Swivels are designed to the highest specifications for underground and overhead pulling applications. All swivels are stringently quality tested and inspected to ensure optimum reliability and performance.



Slingco part no.	Safe working load (lb)		A	Ø B	C	D	Ø E
	Underground	Overhead					
ZSW2091	2,250	1,350	3 3/8"	7/8"	3/8"	7/8"	5/16"
ZSW2092	3,500	2,100	4"	1"	7/16"	1 1/16"	3/8"
ZSW2093	5,000	3,000	4 15/16"	1 1/4"	9/16"	1 1/4"	3/8"
ZSW2094	7,000	4,200	5 3/16"	1 3/8"	9/16"	1 13/32"	1/2"
ZSW2096	10,000	6,000	6 3/16"	1 25/32"	45/64"	1 3/4"	5/8"
ZSW2097	15,000	9,000	7 5/16"	2 3/32"	25/32"	2 1/8"	23/32"

3:1 factor of safety used, based on the ultimate load for underground use  
5:1 factor of safety used, based on the ultimate load for overhead use

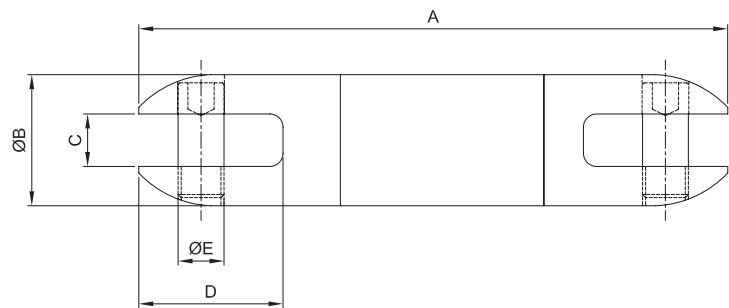
### Swivel and Cable Grip match-up

Revolving Eye	Flexible Eye MU	Approx breaking strength of cable grip (lb)	Cable grip color code	Size range O.D.	Recommended swivel	Safe working load of swivel (lb)
ZCS2177	ZCS1710	7,000	Dark green	0.25 - 0.50"	ZSW2092	3,500
ZCS2178	ZCS1711	10,500	Brown	0.50 - 0.75"	ZSW2093	5,000
ZCS2179	ZCS1712	14,100	Light blue	0.75 - 1.00"	ZSW2093	5,000
ZCS2180	ZCS1713	25,000	Gold	1.00 - 1.25"	ZSW2096	10,000
ZCS2181	ZCS1714	31,000	Black	1.25 - 1.50"	ZSW2096	10,000
ZCS2182	ZCS1715	31,000	Red	1.50 - 1.75"	ZSW2096	10,000
ZCS2183	ZCS1716	43,000	Dark blue	1.75 - 2.25"	ZSW2097	15,000

The above is intended as a rough guide. The recommended working load should be determined by the competent person(s) using the cable grip and/or Slingco swivel

## Line Pulling Swivel - Galvanized

Slingco Line Swivels are designed to the highest specifications for underground and overhead pulling applications. All swivels are stringently quality tested and inspected to ensure optimum reliability and performance.



Slingco part no.	Safe working load (lb)		A	Ø B	C	D	Ø E
	Underground	Overhead					
ZSW2649	4,000	2,400	4 3/4"	1 1/4"	19/32"	1 3/16"	3/8"
ZSW2929	8,000	4,800	5 3/8"	1 1/2"	5/8"	1 3/8"	7/16"
ZSW2857	30,000	18,000	11 1/8"	2 1/2"	1"	2 3/4"	7/8"

3:1 factor of safety used, based on the ultimate load for underground use  
5:1 factor of safety used, based on the ultimate load for overhead use

## Swivel Tester

Evaluates new swivels and checks the integrity of existing swivels during their operational life.



Unlike many tools used in Electrical Transmission work, it's difficult to see the wear and tear that occurs inside a line swivel. The ability to perform testing on a batch of swivels that have been used previously allows you to proof load them prior to use.

We offer two models of swivel tester, one operated by a hand pump - for use in field situations where no electricity is present - and a PC single phase controlled version. The PC controlled version allows working loads to be pre-set and even batch numbers can be stored with the easy to use software.



- Simulates working load operational conditions
- Tests swivels up to 30,000 lb load
- Manual and automatic (PC controlled) models
- Accurate to +/- 1%
- Simple to operate

## Banding Tool



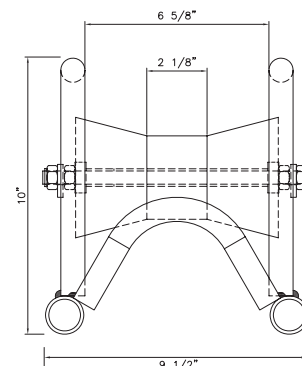
The Slingco Banding Tool is the fast and easy way to install banding clamps on your cable grips.

Designed for fast and efficient installation of steel bands for cable grips, hoses and many other applications. The drop forged construction and comfortable design makes it quick and easy to use and guarantee a long and useful tool life.

## Cable Laying Roller



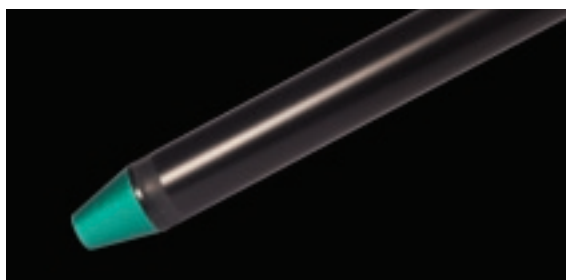
They are of steel construction with zinc plating for general purpose cable installation work in trenches. They are suitable for power, telecoms and utility installations, and can bridge existing cables in trenches or ducts.



Slingco part no.	Base footprint	Height to the top of the roller	Handle height
ZGP2395	12 x 9 1/2"	7 1/8"	10"

## Feed Tube

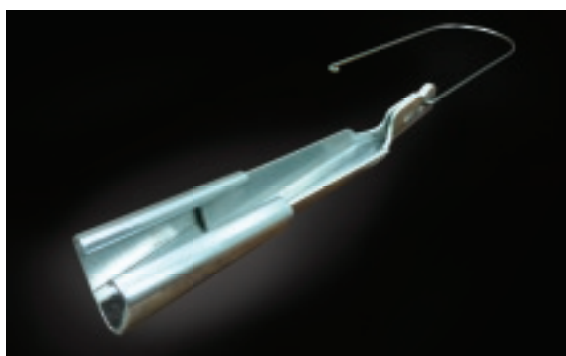
Due to the tight construction of the cable grip, we recommend using the Slingco Feed Tube when inserting cable or rope into the A Type Cable grips. For ease of use, our feed tubes are color-coded to match the A Type Cable grip.



Slingco part no.	Tube to fit rope diameter	Feed tube length	Matches Slingco Cable Grip ref	Cable grip color
FTU1890	0.25 - 0.65"	28"	ZCS1799	Black
FTU1891	0.50 - 0.90"	40"	ZCS1800	Dark green
FTU1892	0.75 - 1.10"	52"	ZCS1801	Red
FTU1893	1.00 - 1.50"	67"	ZCS1802	Dark blue
FTU1894	1.25 - 1.70"	83"	ZCS1803	Yellow
FTU1895	1.50 - 2.10"	96"	ZCS1804	Aluminum

## Service Wedge Clamp

The Slingco Aluminum Wedge Slider Clamp provides strong and effective power cable supports when attached to buildings or line poles. It also allows correction of any sag that can occur in cables over a period of time. Incorporates rigid stainless steel bail.



Slingco part no.	Conductor range			Size (inches)	
	ACSR	AL	AAAC	D	L
ZSC2103	2 - 6	1 str - 6 sol	2 - 6	2 3/8"	12"
ZSC2104	1/0 - 4	2/0 str - 2 sol	1/0 - 4	2 3/8"	12 1/2"
ZSC2105	4/0 - 2/0	4/0 str - 2/0 sol	4/0 - 2/0	2 3/8"	12 3/4"

# What our customers say

“Slingco delivers only the highest quality in grips, ensuring that the needs of the industry are met.”

ENGINEER, LARGE MULTINATIONAL ENERGY PRODUCTS COMPANY, TX

“[We] use Slingco cable grips for our Wind Turbine cables and they are an excellent fit for our assemblies. I would highly recommend these for any hanging cable systems.”

PURCHASING AGENT, WIND TURBINE MANUFACTURER, NJ

“We are very pleased with the outstanding service Slingco provides. In our industry we must get quality products to our customers in a timely manner.”

PRESIDENT, MAJOR STOCKING DISTRIBUTOR OF LINEMAN'S TOOLS AND EQUIPMENT, CANADA

“Slingco has a wide variety of high quality and reliable grips. They have never let us down.”

PRESIDENT, MAJOR DISTRIBUTOR OF INDUSTRIAL PRODUCTS, CA

“... the service we receive from Slingco is up there with the best .”

PROCUREMENT MANAGER, MAJOR HYDRAULIC HOSE AND SERVICE COMPANY, UK

“...to be honest you do not come across too many companies ... that provide such service. Hope you pass this on to the people you work for so they see what an excellent job you're doing.”

PURCHASING AND SUPPLY MANAGER, LEADING INTERNATIONAL OIL AND GAS COMPANY

“Slingco have worked with us on developing several [custom] cable grips and the service, quality and professionalism always astounds us.”

MANAGING DIRECTOR, MAJOR INTERNATIONAL WIND TURBINE COMPANY

“The response and delivery we get from Slingco is fantastic.”

PROJECTS MANAGER, INTERNATIONAL OIL COMPANY

**CALL US TOLL FREE 888 685 9478**



Slingco America, Inc.  
455 Ethan Drive, PO Box 143390, Fayetteville, Georgia 30214  
TOLL FREE: 888 685 9478 | Fax: 888 728 4047 | [sales@cablegrip.com](mailto:sales@cablegrip.com) | [www.cablegrip.com](http://www.cablegrip.com)